

- NOTES:
1. DIMENSIONS SHOWN IN INCHES AND [mm].
  2. 5/8" STOP SHOWN.
  3. 12 GAGE REINFORCEMENT PLATE INSIDE DOOR IS RECOMMENDED AT DEVICE MOUNTING LOCATION.
  4. DRILL PILOT HOLES STRAIGHT & LEVEL THROUGH DOOR AT LOCATIONS "E" & "G".

**RESPONSIBILITY**

Door and Frame Manufacturers are responsible for providing adequate construction or reinforcements for proper installation of hardware shown. All architectural builders hardware must be installed on properly reinforced doors and frames regardless of the type, material or method of construction.

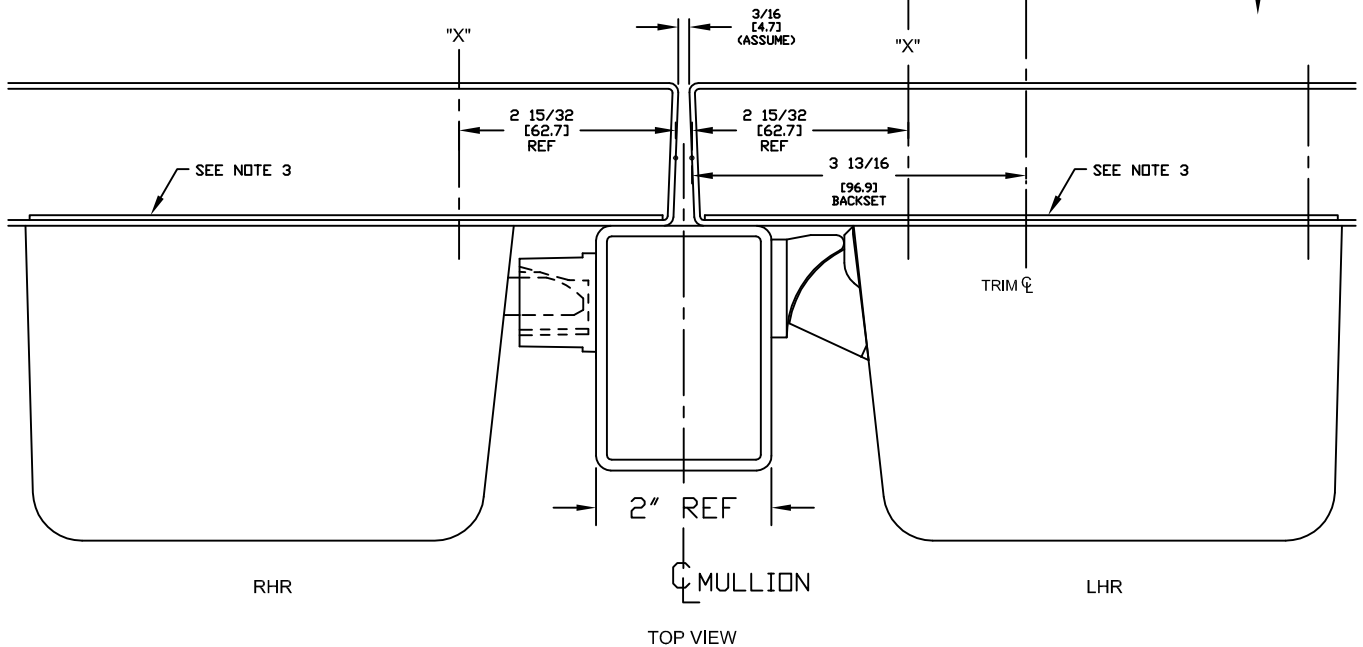
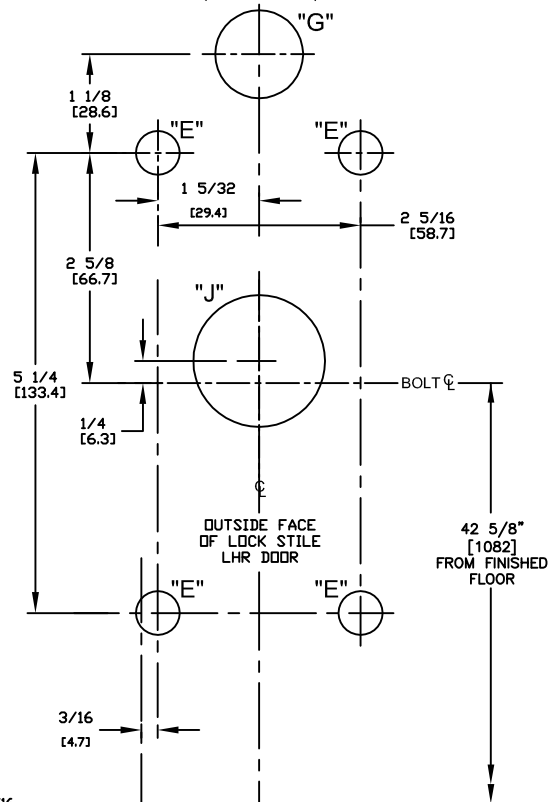
TEMPLATE  
METAL DOOR  
ECL-600, LHR  
WITH ECL-620 TRIM

HDG. _____ DR. _____	
<b>DETEX CORPORATION</b>	
DO NOT SCALE DRAWING	
DATE 6-23-17	TEMPLATE NUMBER T2111 page 1 of 2

OUTSIDE TEMPLATE

OUTSIDE  
LEFT HAND  
REVERSE DOOR  
LHR  
(SWING OUT)

"E" = 1/2" DRILL  
"G" = 1" DRILL  
"J" = 1-1/2" DRILL



HDG. \_\_\_\_\_ DR. \_\_\_\_\_

**DETEX**  
CORPORATION

DO NOT SCALE DRAWING

DATE 6-23-17

TEMPLATE NUMBER T2111 page 2 of 2

RESPONSIBILITY

Door and Frame Manufacturers are responsible for providing adequate construction or reinforcements for proper installation of hardware shown. All architectural builders hardware must be installed on properly reinforced doors and frames regardless of the type, material or method of construction.

TEMPLATE  
METAL DOOR  
ECL-600, LHR  
WITH ECL-620 TRIM